

CHANNEL RUBBER STRIP



SPECIFICATIONS:

Commercial grade black EPDM channel:

Hardness: 65 Duro hardness (Shore Durometer A)

Tensile Strength: 1,650 PSI

Elongation: 310%

STYLE RTCHNL
Round Top

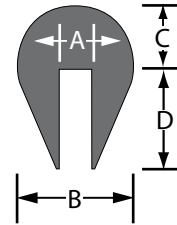
STYLE THCHNL
Tapered Hex
Flat Top

STYLE HFTCHNL
Hex Flat Top

This channel rubber strip is ideal for use as a protective edge on shaker screens and a variety of other types of industrial equipment.

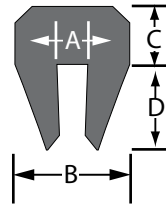
Standard Round Top Channel

| Item Number | Size (Inches) | A | DIMENSION | | |
|---------------|---------------|-----|-----------|-----|------|
| | | | B | C | D |
| RTCHNL-04X200 | 1/4" | .25 | .81 | .44 | .56 |
| RTCHNL-06X200 | 3/8" | .38 | 1.00 | .50 | .50 |
| RTCHNL-08X100 | 1/2" | .50 | 1.25 | .56 | .63 |
| RTCHNL-12X100 | 3/4" | .75 | 1.20 | .63 | 1.40 |



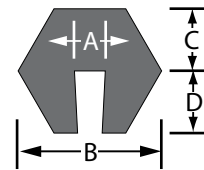
Tapered Hex-Flat Top Channel

| Item Number | Size (Inches) | A | DIMENSION | | |
|---------------|---------------|-----|-----------|-----|-----|
| | | | B | C | D |
| THCHNL-04X200 | 1/4" | .25 | .65 | .38 | .63 |
| THCHNL-06X200 | 3/8" | .38 | .85 | .50 | .63 |
| THCHNL-08X100 | 1/2" | .50 | 1.20 | .50 | .69 |
| THCHNL-12X100 | 3/4" | .75 | 1.45 | .50 | .75 |



Hex-Flat Top Channel

| Item Number | Size (Inches) | A | DIMENSION | | |
|----------------|---------------|-----|-----------|-----|-----|
| | | | B | C | D |
| HFTCHNL-04X200 | 1/4" | .25 | .75 | .31 | .38 |
| HFTCHNL-06X200 | 3/8" | .38 | .88 | .31 | .44 |
| HFTCHNL-08X100 | 1/2" | .50 | 1.00 | .44 | .50 |
| HFTCHNL-12X100 | 3/4" | .75 | 1.25 | .50 | .63 |



ORDERING INFORMATION:

| Item Number | Channel Size (Inches) | Roll Length Linear Ft. | Approx. Wt./Roll |
|----------------|-----------------------|------------------------|------------------|
| RTCHNL-04X200 | 1/4" | 200 | 50 lbs. |
| RTCHNL-06X200 | 3/8" | 200 | 70 lbs. |
| RTCHNL-08X100 | 1/2" | 100 | 51 lbs. |
| RTCHNL-12X100 | 3/4" | 100 | 70 lbs. |
| THCHNL-04X200 | 1/4" | 200 | 44 lbs. |
| THCHNL-06X200 | 3/8" | 200 | 64 lbs. |
| THCHNL-08X100 | 1/2" | 100 | 48 lbs. |
| THCHNL-12x100 | 3/4" | 100 | 62 lbs. |
| HFTCHNL-04X200 | 1/4" | 200 | 34 lbs. |
| HFTCHNL-06X200 | 3/8" | 200 | 42 lbs. |
| HFTCHNL-08X100 | 1/2" | 100 | 44 lbs. |
| HFTCHNL-12X100 | 3/4" | 100 | 40 lbs. |